



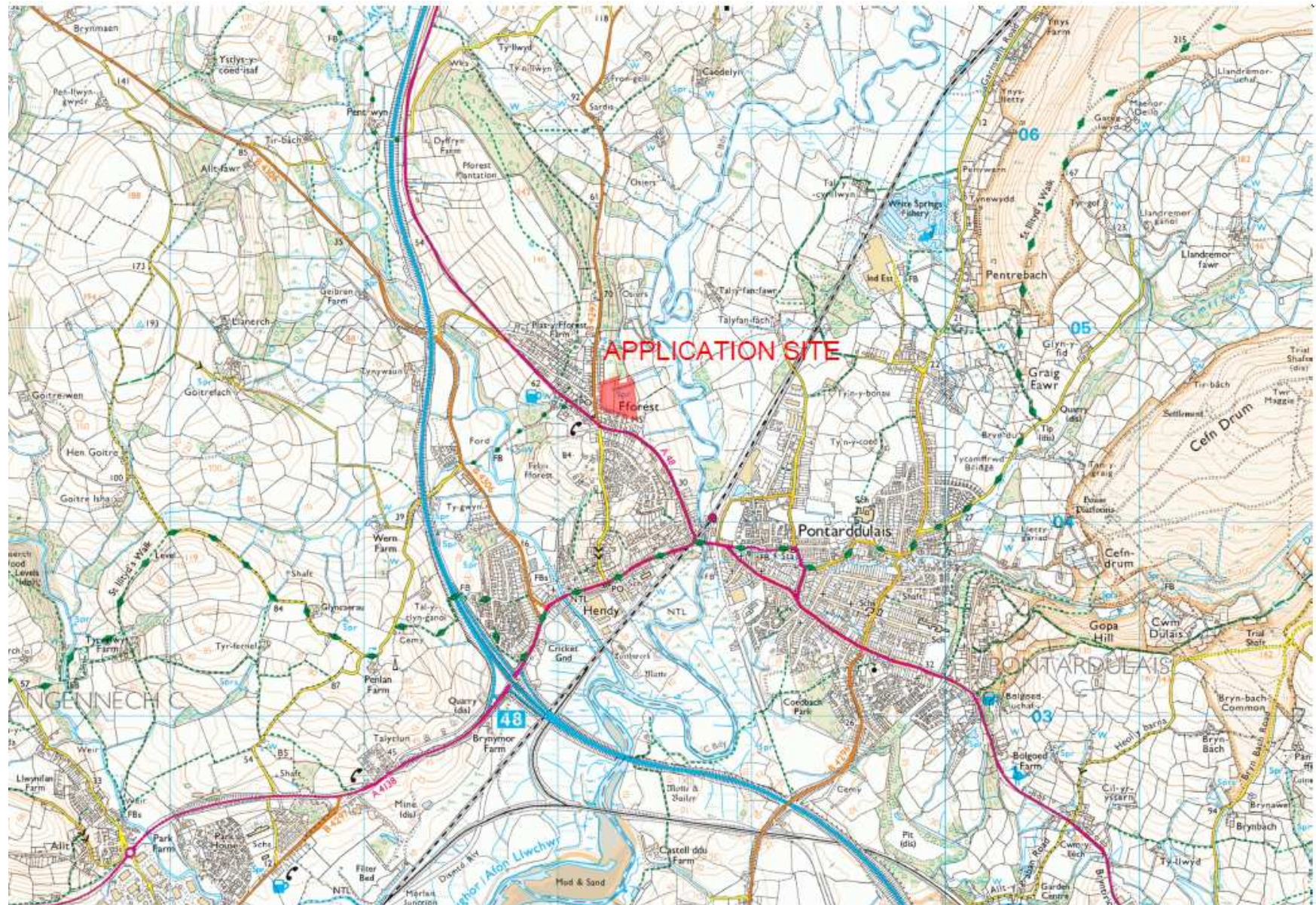
***CEISIADAU YR ARGYMHELLIR EU
BOD YN CAEL EU CYMERADWYO***

**APPLICATIONS RECOMMENDED
FOR APPROVAL**



S/35215

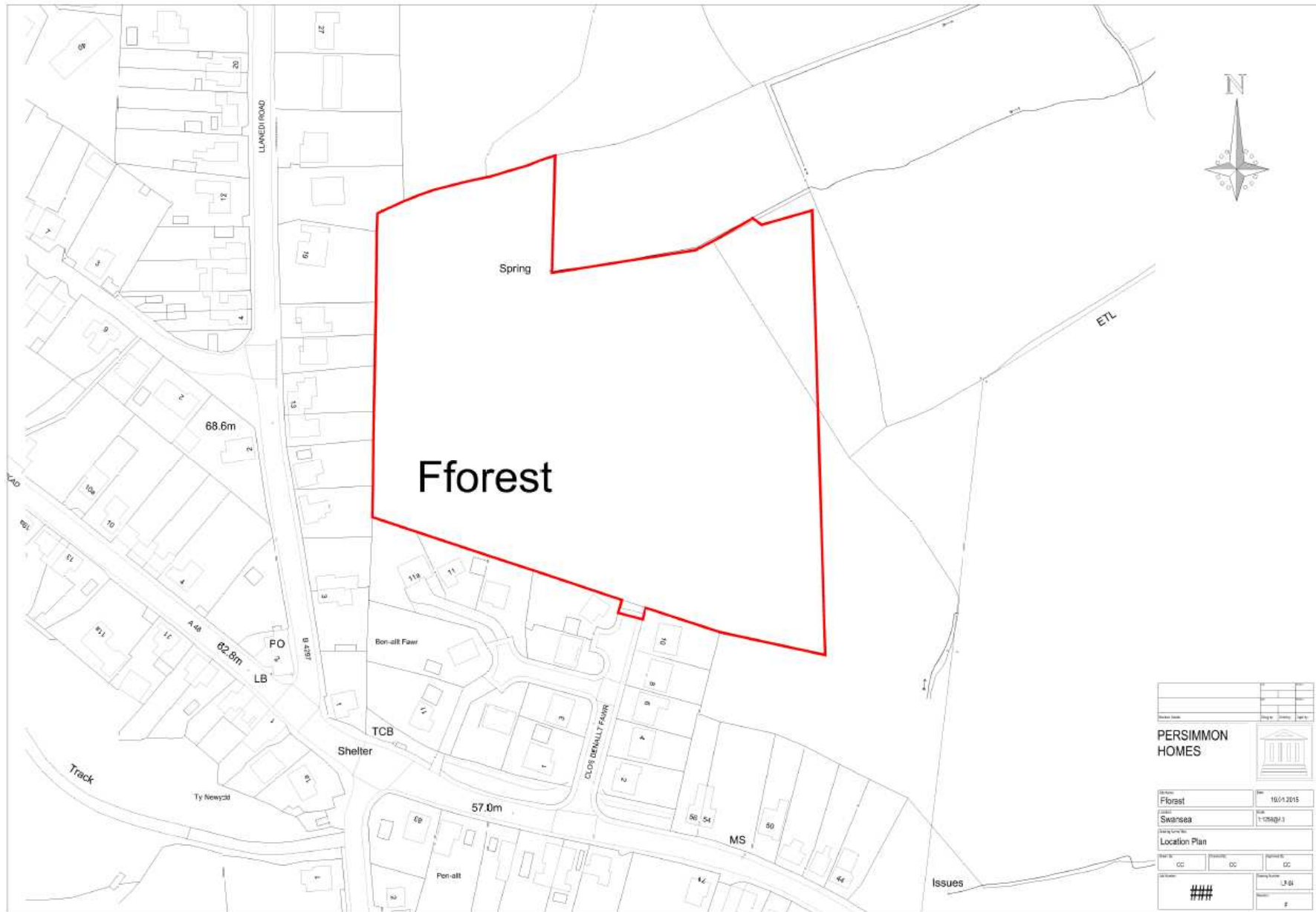
S/35215



S/35215



S/35215



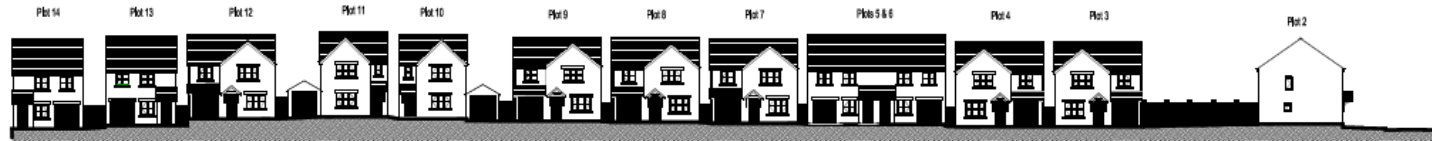
S/35215



Open Mix House Type	No's	Sq Ft Total Sq Ft	Units	Stories	Individual % Group %	
021 - Attract	2	638	1276	2	2	4%
737 - Mobility	5	739	2517	2	2,5	7%
767 - Harbour	8	761	6088	3	2,3	17%
818 - Countryside	6	929	2508	3	2	13%
903 - Midland	10	903	9030	3	2	23%
989 - Clayton Corner	2	989	1978	3	2	4%
1006 - Mobility	18	1006	6036	4	2	20%
1222 - Chesham	6	1222	7332	4	2	13%

Affordable House Type	No's	Sq Ft Total Sq Ft	Units	Stories	Individual % Group %	
020 - WHUD	3	625	1874	2	2	6%
021 - WHUD	2	625	1250	3	2	4%

S/35215



SECTION 1-1



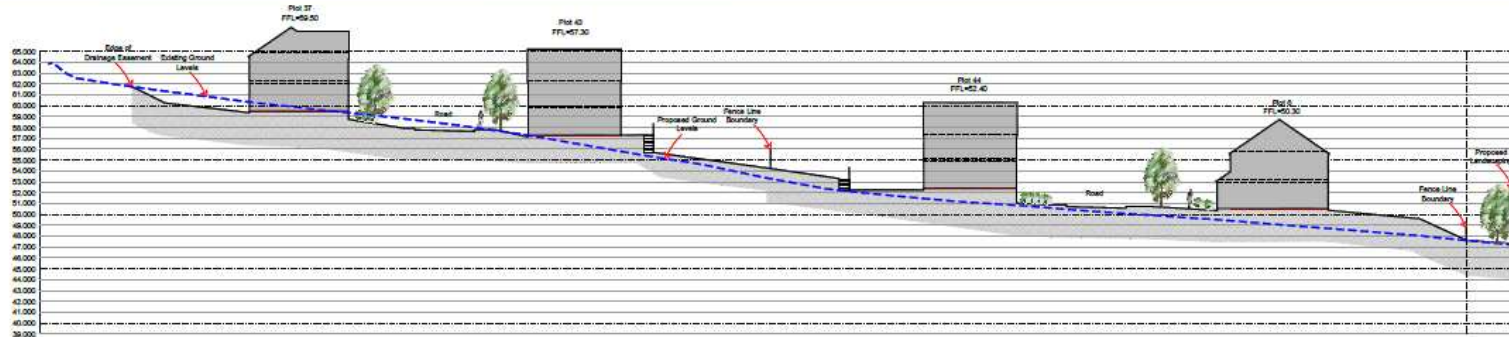
SECTION 2-2



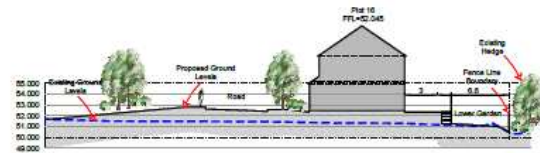
SITE NAME: FFOREST
DRAWING TITLE: STREET ELEVATIONS
DRAWING NO: SE-01
SCALE: 1:250@A1, 1:500@A3
REV: #
DATE: 21.02.17

FFOREST

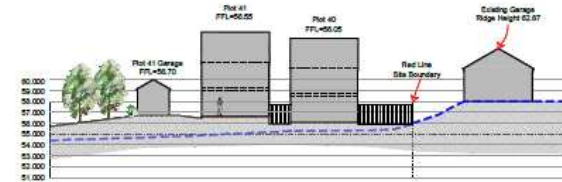
S/35215



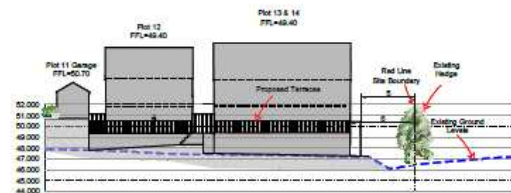
SECTION 4-4



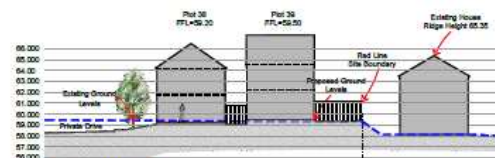
SECTION 5-5



SECTION 8-8



SECTION 6-6



SECTION 7-7

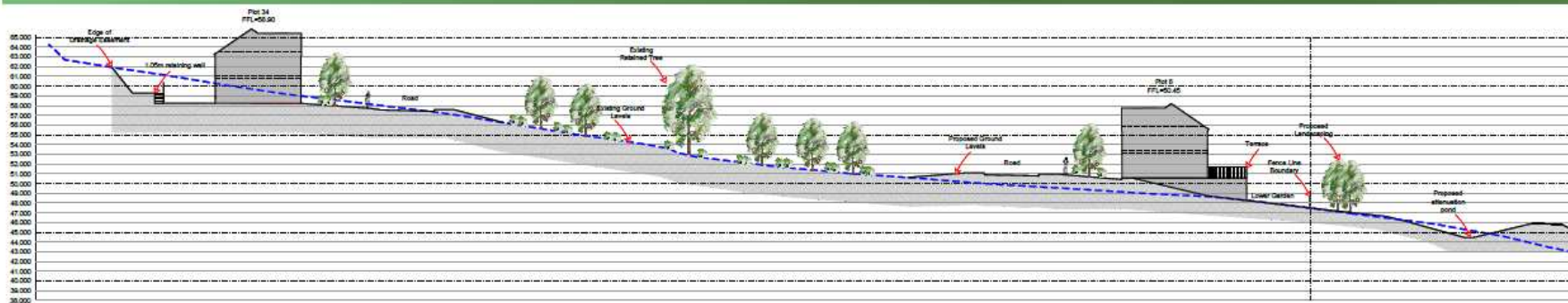


REV C - SECTIONS 7-7 & 8-8 AMENDED
30/11/17 CC
REV A - SECTIONS AMENDED IN ACCORDANCE WITH
LATEST ENGINEERING LAYOUT 05/10/17 CC

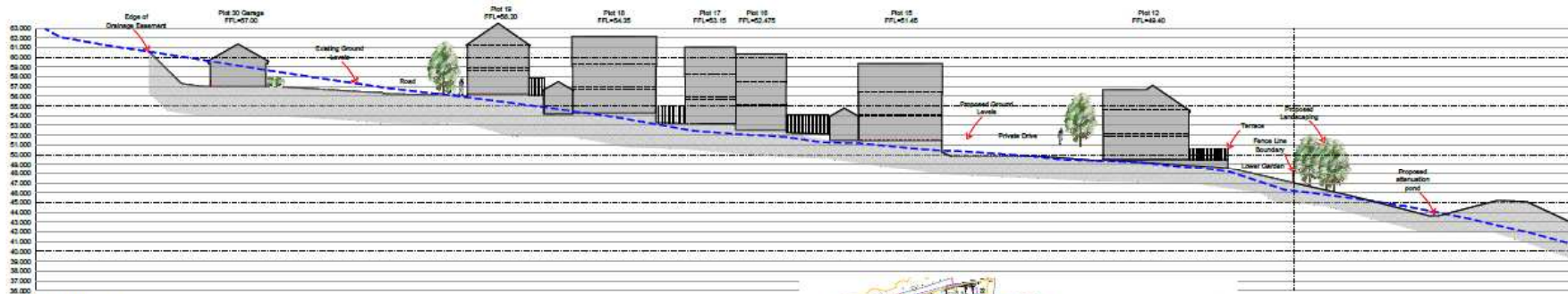


SITE NAME: FFOREST
DRAWING TITLE: SITE CROSS SECTION
DRAWING NO: SCS-02
SCALE: 1:100@A1, 1:200@A3
REV: B
DATE: 17.08.2017

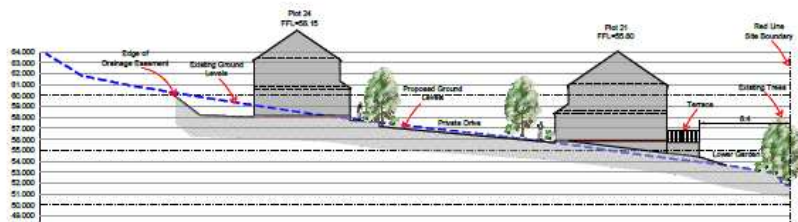
S/35215



SECTION 3-3



SECTION 2-2



SECTION 1-1



REV C - SECTIONS 7-7 & 8-8 AMENDED
 COMMENTS 15/10/17 CC
 REV B - SECTIONS AMENDED TO PLANNERS
 COMMENTS 15/10/17 CC
 REV A - SECTIONS AMENDED IN ACCORDANCE WITH
 LATEST ENGINEERING LAYOUT 05/10/17 CC

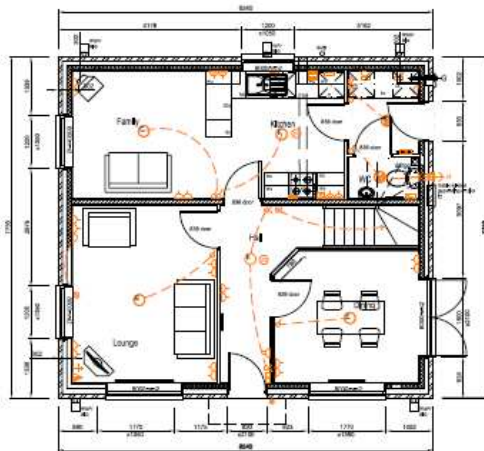


SITE NAME: FFOREST
 DRAWING TITLE: SITE CROSS SECTION
 DRAWING NO: SCS-01
 SCALE: 1:100@A1, 1:200@A3
 REV: B
 DATE: 17.08.2017

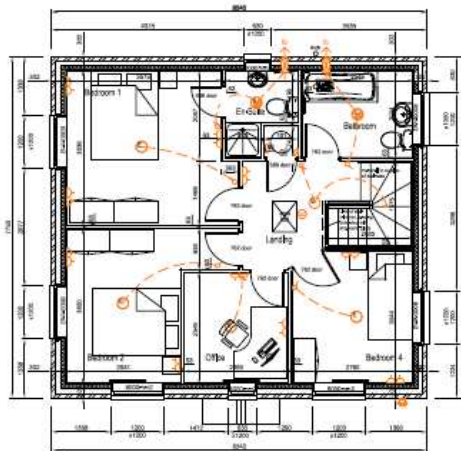
S/35215



113m² 4 bed house requires EQUIVALENT 55'000mm² trickle ventilation. All vent rates shown are EQUIVALENT rates - total 76'000mm²



Ground Floor Plan.

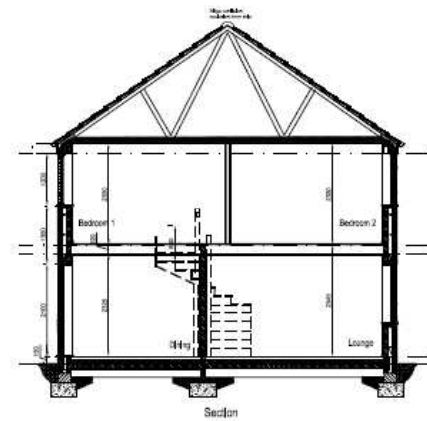


First Floor Plan.

- Electrical Key**
- 1. 13Amp socket outlet
 - 2. 13Amp socket outlet with switch
 - 3. 13Amp socket outlet with switch and RCD
 - 4. 13Amp socket outlet with switch and RCD
 - 5. 13Amp socket outlet with switch and RCD
 - 6. 13Amp socket outlet with switch and RCD
 - 7. 13Amp socket outlet with switch and RCD
 - 8. 13Amp socket outlet with switch and RCD
 - 9. 13Amp socket outlet with switch and RCD
 - 10. 13Amp socket outlet with switch and RCD
 - 11. 13Amp socket outlet with switch and RCD
 - 12. 13Amp socket outlet with switch and RCD
 - 13. 13Amp socket outlet with switch and RCD
 - 14. 13Amp socket outlet with switch and RCD
 - 15. 13Amp socket outlet with switch and RCD
 - 16. 13Amp socket outlet with switch and RCD
 - 17. 13Amp socket outlet with switch and RCD
 - 18. 13Amp socket outlet with switch and RCD
 - 19. 13Amp socket outlet with switch and RCD
 - 20. 13Amp socket outlet with switch and RCD
 - 21. 13Amp socket outlet with switch and RCD
 - 22. 13Amp socket outlet with switch and RCD
 - 23. 13Amp socket outlet with switch and RCD
 - 24. 13Amp socket outlet with switch and RCD
 - 25. 13Amp socket outlet with switch and RCD
 - 26. 13Amp socket outlet with switch and RCD
 - 27. 13Amp socket outlet with switch and RCD
 - 28. 13Amp socket outlet with switch and RCD
 - 29. 13Amp socket outlet with switch and RCD
 - 30. 13Amp socket outlet with switch and RCD
 - 31. 13Amp socket outlet with switch and RCD
 - 32. 13Amp socket outlet with switch and RCD
 - 33. 13Amp socket outlet with switch and RCD
 - 34. 13Amp socket outlet with switch and RCD
 - 35. 13Amp socket outlet with switch and RCD
 - 36. 13Amp socket outlet with switch and RCD
 - 37. 13Amp socket outlet with switch and RCD
 - 38. 13Amp socket outlet with switch and RCD
 - 39. 13Amp socket outlet with switch and RCD
 - 40. 13Amp socket outlet with switch and RCD
 - 41. 13Amp socket outlet with switch and RCD
 - 42. 13Amp socket outlet with switch and RCD
 - 43. 13Amp socket outlet with switch and RCD
 - 44. 13Amp socket outlet with switch and RCD
 - 45. 13Amp socket outlet with switch and RCD
 - 46. 13Amp socket outlet with switch and RCD
 - 47. 13Amp socket outlet with switch and RCD
 - 48. 13Amp socket outlet with switch and RCD
 - 49. 13Amp socket outlet with switch and RCD
 - 50. 13Amp socket outlet with switch and RCD
 - 51. 13Amp socket outlet with switch and RCD
 - 52. 13Amp socket outlet with switch and RCD
 - 53. 13Amp socket outlet with switch and RCD
 - 54. 13Amp socket outlet with switch and RCD
 - 55. 13Amp socket outlet with switch and RCD
 - 56. 13Amp socket outlet with switch and RCD
 - 57. 13Amp socket outlet with switch and RCD
 - 58. 13Amp socket outlet with switch and RCD
 - 59. 13Amp socket outlet with switch and RCD
 - 60. 13Amp socket outlet with switch and RCD
 - 61. 13Amp socket outlet with switch and RCD
 - 62. 13Amp socket outlet with switch and RCD
 - 63. 13Amp socket outlet with switch and RCD
 - 64. 13Amp socket outlet with switch and RCD
 - 65. 13Amp socket outlet with switch and RCD
 - 66. 13Amp socket outlet with switch and RCD
 - 67. 13Amp socket outlet with switch and RCD
 - 68. 13Amp socket outlet with switch and RCD
 - 69. 13Amp socket outlet with switch and RCD
 - 70. 13Amp socket outlet with switch and RCD
 - 71. 13Amp socket outlet with switch and RCD
 - 72. 13Amp socket outlet with switch and RCD
 - 73. 13Amp socket outlet with switch and RCD
 - 74. 13Amp socket outlet with switch and RCD
 - 75. 13Amp socket outlet with switch and RCD
 - 76. 13Amp socket outlet with switch and RCD
 - 77. 13Amp socket outlet with switch and RCD
 - 78. 13Amp socket outlet with switch and RCD
 - 79. 13Amp socket outlet with switch and RCD
 - 80. 13Amp socket outlet with switch and RCD
 - 81. 13Amp socket outlet with switch and RCD
 - 82. 13Amp socket outlet with switch and RCD
 - 83. 13Amp socket outlet with switch and RCD
 - 84. 13Amp socket outlet with switch and RCD
 - 85. 13Amp socket outlet with switch and RCD
 - 86. 13Amp socket outlet with switch and RCD
 - 87. 13Amp socket outlet with switch and RCD
 - 88. 13Amp socket outlet with switch and RCD
 - 89. 13Amp socket outlet with switch and RCD
 - 90. 13Amp socket outlet with switch and RCD
 - 91. 13Amp socket outlet with switch and RCD
 - 92. 13Amp socket outlet with switch and RCD
 - 93. 13Amp socket outlet with switch and RCD
 - 94. 13Amp socket outlet with switch and RCD
 - 95. 13Amp socket outlet with switch and RCD
 - 96. 13Amp socket outlet with switch and RCD
 - 97. 13Amp socket outlet with switch and RCD
 - 98. 13Amp socket outlet with switch and RCD
 - 99. 13Amp socket outlet with switch and RCD
 - 100. 13Amp socket outlet with switch and RCD
- Note - for kitchen refer also to kitchen suppliers drawing

Spaced Timber Frame
 The walls and roof are constructed using spaced timber frame. The walls are made of 140mm thick timber studs spaced at 400mm centres. The roof is made of 140mm thick timber rafters spaced at 400mm centres. The floor is made of 140mm thick timber joists spaced at 400mm centres. The walls and roof are finished with a 12.5mm thick plasterboard. The floor is finished with a 12.5mm thick plasterboard. The walls and roof are finished with a 12.5mm thick plasterboard. The floor is finished with a 12.5mm thick plasterboard.

General - All Dwellings
 The walls and roof are constructed using spaced timber frame. The walls are made of 140mm thick timber studs spaced at 400mm centres. The roof is made of 140mm thick timber rafters spaced at 400mm centres. The floor is made of 140mm thick timber joists spaced at 400mm centres. The walls and roof are finished with a 12.5mm thick plasterboard. The floor is finished with a 12.5mm thick plasterboard. The walls and roof are finished with a 12.5mm thick plasterboard. The floor is finished with a 12.5mm thick plasterboard.



Rev A - CD Detector added 25/03/2015
 Rev B - Floor Joist/beam replaced 22/04/2015
 Rev C - 4th floor windows replaced 20/04/2015
 Rev D - 4th floor windows replaced 20/04/2015

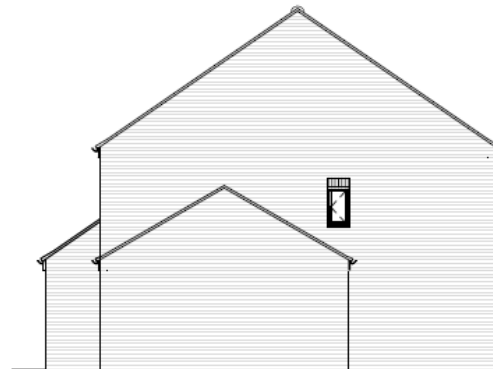
PERSIMMON HOMES

1222 sqft	
Chedworth Special	171215
CDC-WD06, SP	50@A1, 100@A2
Plans & Elevations (Village)	
	Rev D

S/35215



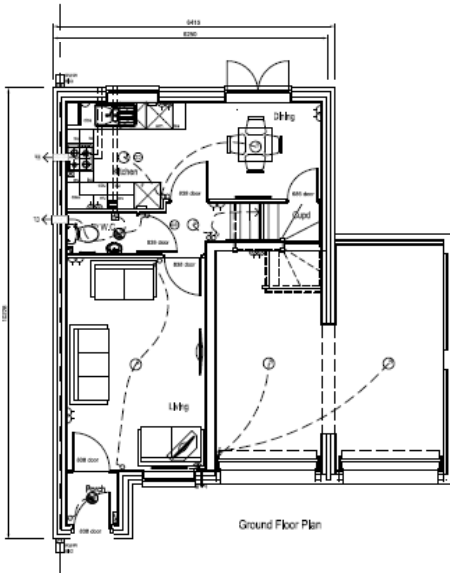
Front Elevation



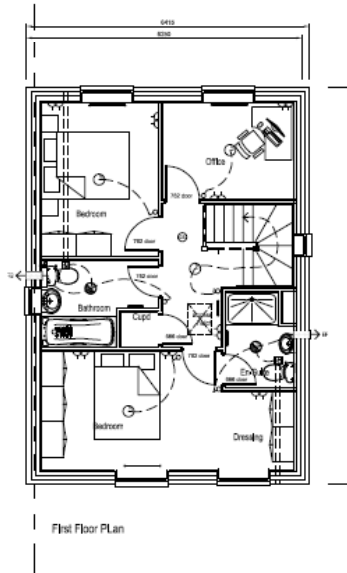
Side Elevation



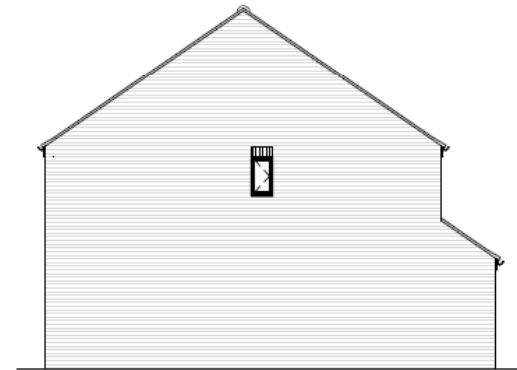
Rear Elevation



Ground Floor Plan



First Floor Plan



Side Elevation

Rev A - 8th floor double window moved to bed 1st to 02/12/19/05
 Rev B - 1st floor window, porch floor removed for 1st 02/11/19/05
 Rev C - Bed 1 window corrected on plan to align 02/11/19/05

PERSIMMON
 HOMES

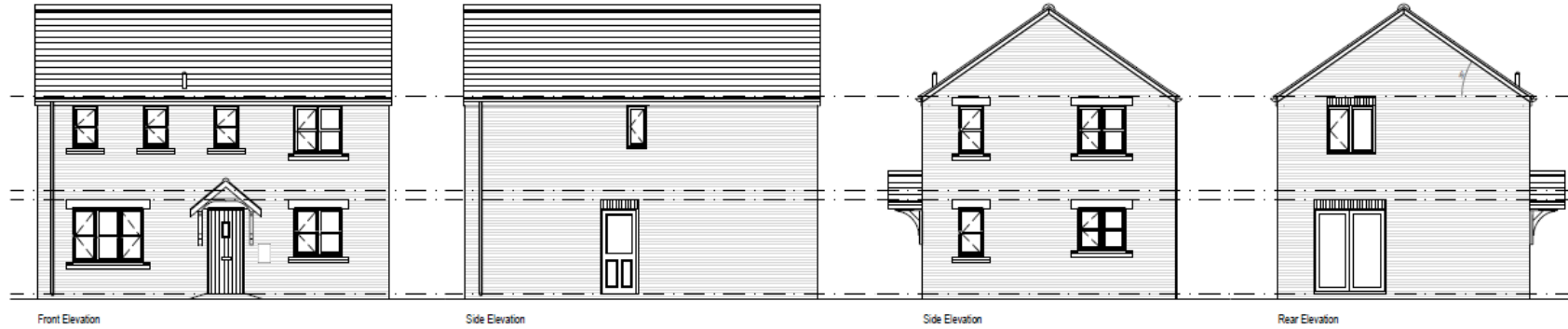


918 sqft	
Chatsworth (Village)	2203/6
CT-WD11	50@A1 100@A3
Plans & Elevations (Planning)	

PLOT 1

Rev G	

S/35215

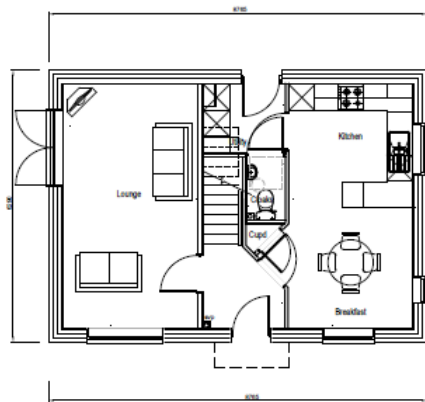


Front Elevation

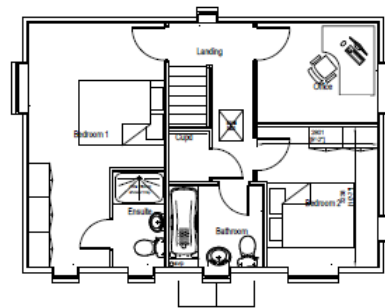
Side Elevation

Side Elevation

Rear Elevation



Ground Floor Plan.



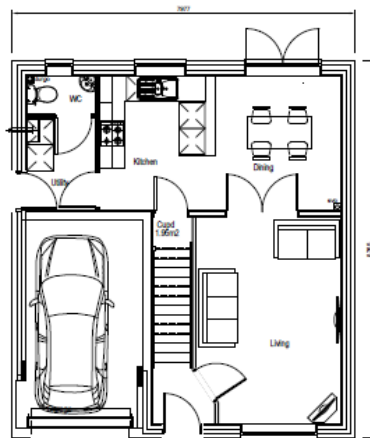
First Floor Plan.

PERSIMMON
HOMES

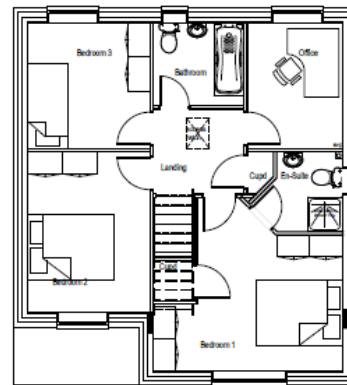


999sqft	
Clayton Corner (Village)	170415
CCA-WD16	50@A1, 100@A3
Plans & Elevations (Planning)	
	Rev 0

S/35215



Ground Floor Plan



First Floor Plan

PERSIMMON
HOMES



1006sqft	
Roseberry (Village)	100613
RS-WD16	50@A1, 100@A5
Plans & Elevations (Planning)	
	Rev 3

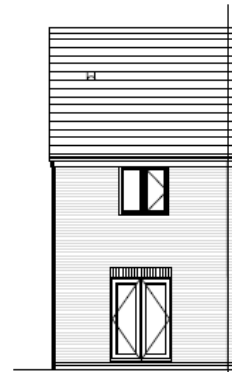
S/35215



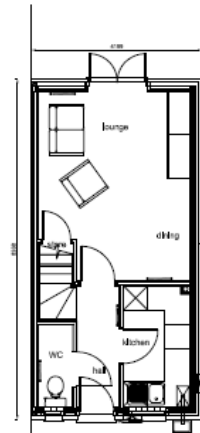
Front Elevation



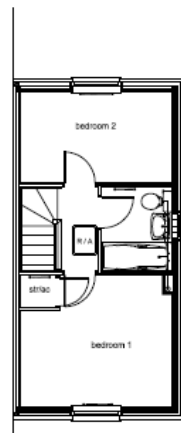
Side Elevation



Rear Elevation



Ground Floor Plan



First Floor Plan

Rev A - Approved Plan on 08/06/2017 10:08 AM
 Rev B - 02/06/2018 10:08 AM
 Rev C - 02/06/2018 10:08 AM
 Rev D - 02/06/2018 10:08 AM
 Rev E - 02/06/2018 10:08 AM
 Rev F - 02/06/2018 10:08 AM
 Rev G - 02/06/2018 10:08 AM
 Rev H - 02/06/2018 10:08 AM
 Rev I - 02/06/2018 10:08 AM
 Rev J - 02/06/2018 10:08 AM
 Rev K - 02/06/2018 10:08 AM

PERSIMMON
 HOMES



628 sqft	
628 - WHQS	000112
628-WHQS-WDD1	050A1, 100BA3
Plans & Elevations (Planning)	
	Rev / -

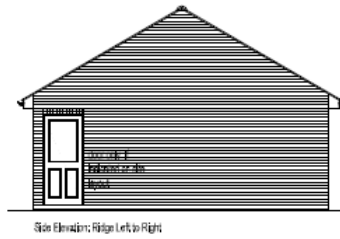
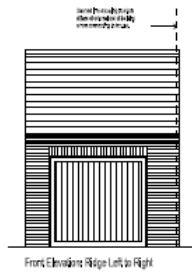
S/35215



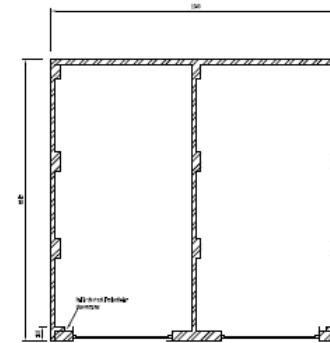
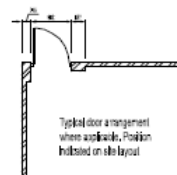
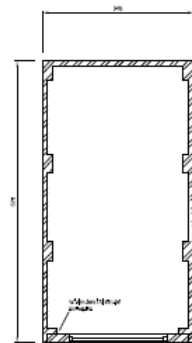
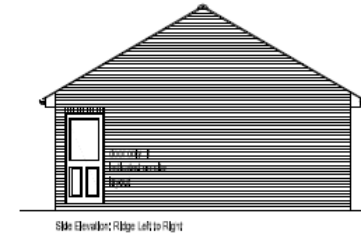
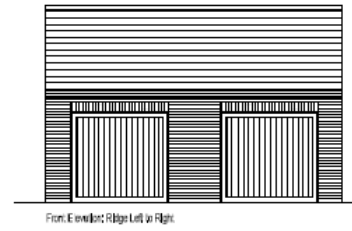
S/35215

Garages

Single



Double / Single

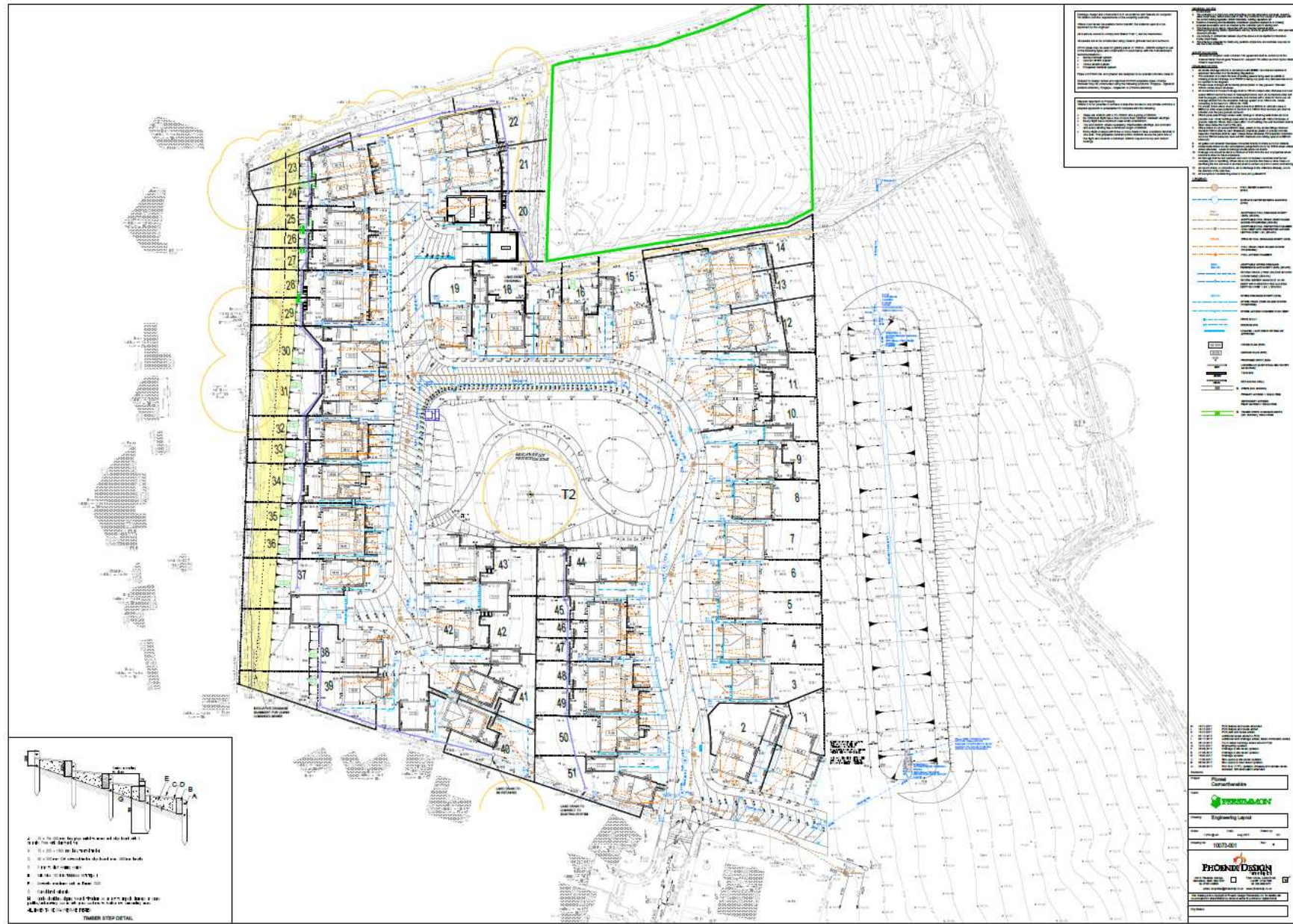


PERSIMMON HOMES

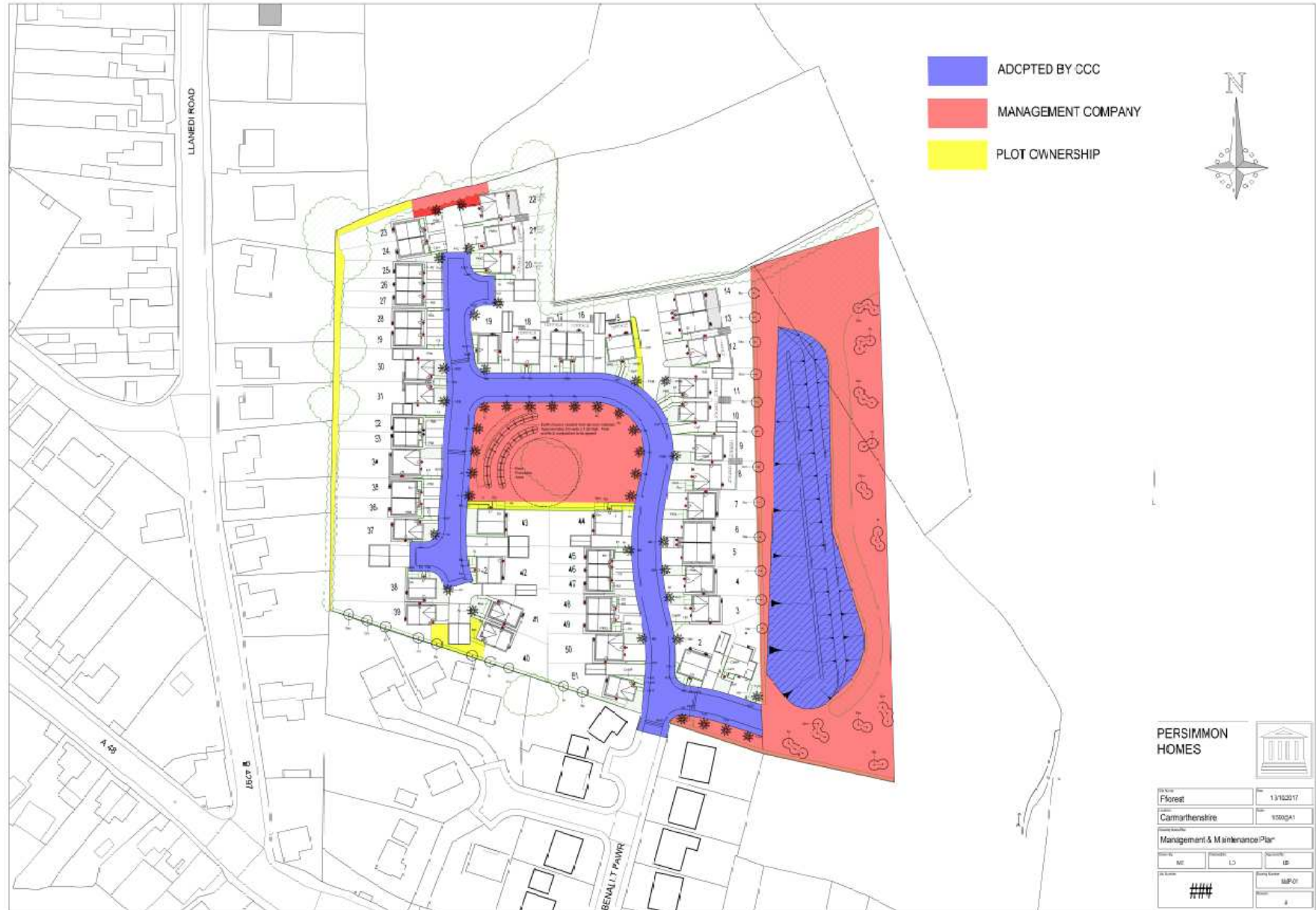


Soft	
Single / Double Garage	Date: 17/01/2014
SGD-01	SGD-01, 1002A3
Plans and Elevations	

S/35215



S/35215



S/35215



S/35215



S/35215



S/35215



S/35215



S/35215



S/35215



S/35215



S/35215



S/35215



S/35215



S/35215



S/35215



S/35215



S/35215



S/35215

